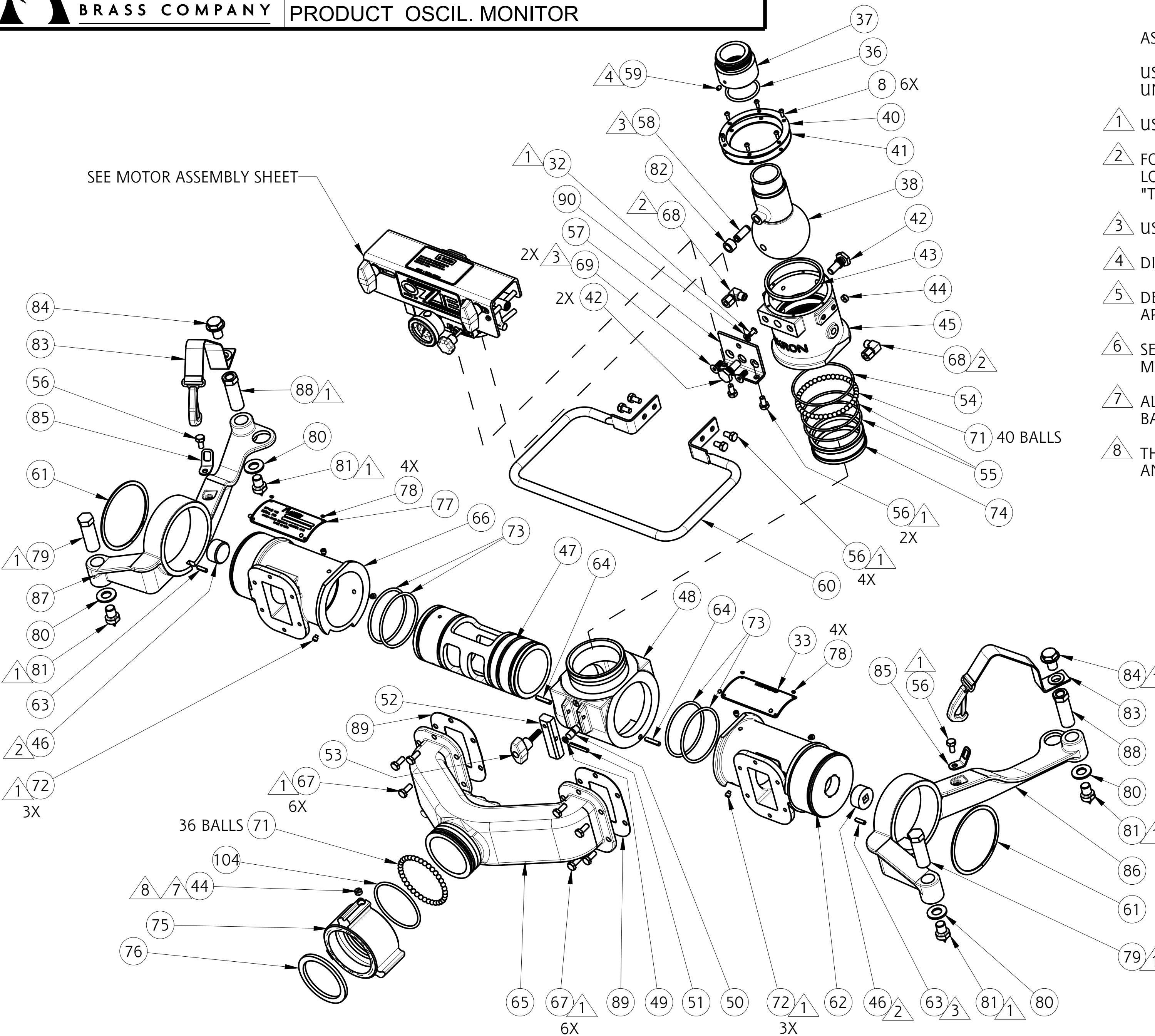


ASSEMBLY NOTES:

USE PARKER O-LUBE ON ALL O-RINGS AND MATING SURFACES UNLESS OTHERWISE NOTED.

- 1 USE PERMABOND LM113 OR LOCTITE 222.
- 2 FOR THREADS UP TO $\varnothing 2"$: USE PERMABOND LH050 OR LOCTITE 592. FOR THREADS BIGGER THAN $\varnothing 2"$: USE AGRO "TUF-GLIDE THREAD SEALANT WITH PTFE".
- 3 USE PRIMER T AND PERMABOND HH120 OR LOCTITE 277.
- 4 DIMPLE AT ASSEMBLY.
- 5 DEGREASE SURFACE WITH RUBBING ALCOHOL BEFORE APPLYING TAG.
- 6 SET SCREW IN ITEM #12 AND DIMPLE IN ITEM #11 MUST BE ALIGNED BEFORE TIGHTENING.
- 7 ALIGN BALL IN HOLE. TIGHTEN PLUG UNTIL TOUCHES BALL. THEN BACK OUT PLUG 1/4-1/2 TURN.
- 8 THOROUGHLY CLEAN THREADS OF PLUG AND MATING PART AND APPLY LOCTITE 425.

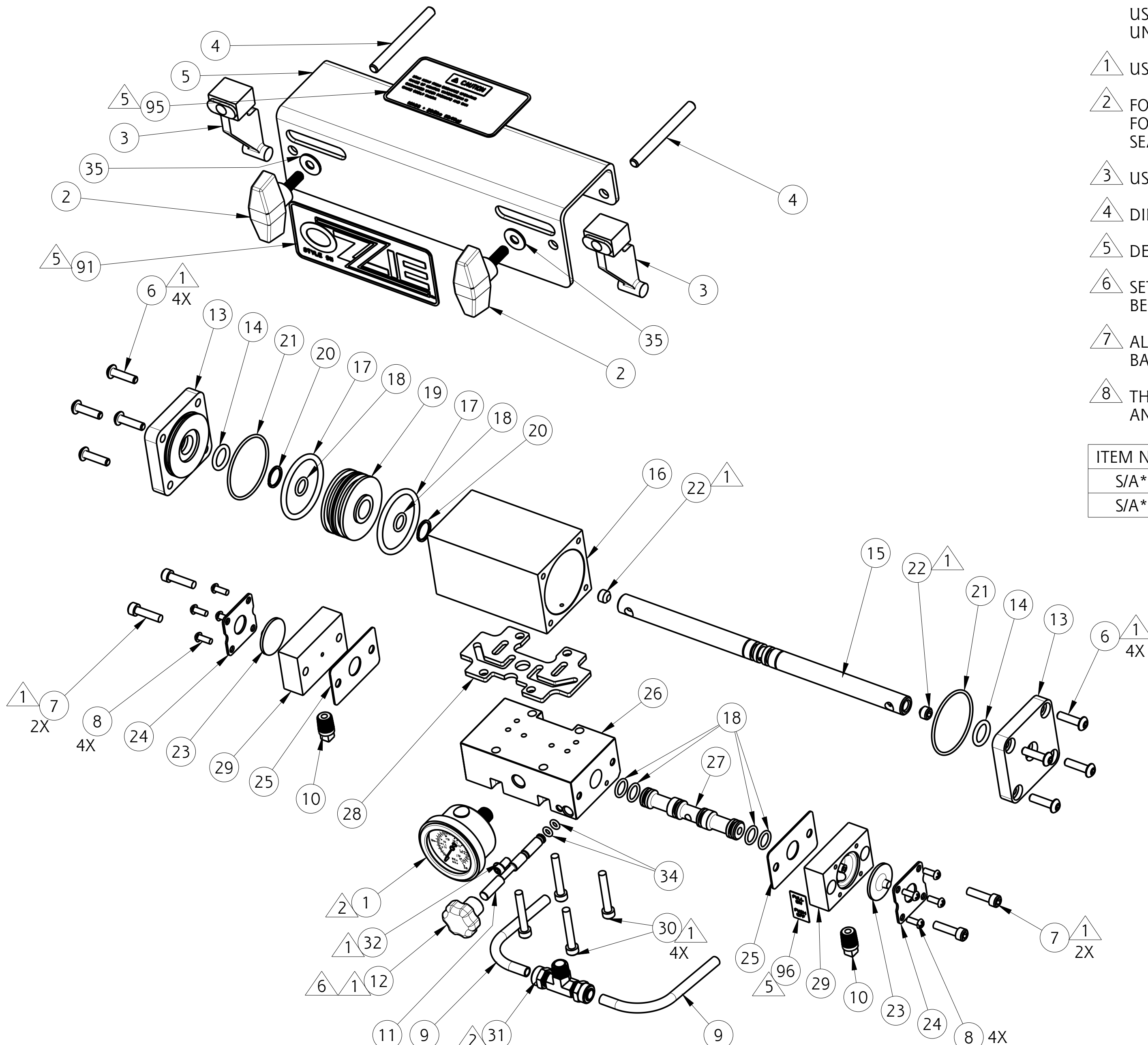
SEE MOTOR ASSEMBLY SHEET



ASSEMBLY NOTES:

USE PARKER O-LUBE ON ALL O-RINGS AND MATING SURFACES UNLESS OTHERWISE NOTED.

- 1 USE PERMABOND LM113 OR LOCTITE 222.
- 2 FOR THREADS UP TO $\varnothing 2"$: USE PERMABOND LH050 OR LOCTITE 592. FOR THREADS BIGGER THAN $\varnothing 2"$: USE AGRO "TUF-GLIDE THREAD SEALANT WITH PTFE".
- 3 USE PRIMER T AND PERMABOND HH120 OR LOCTITE 277.
- 4 DIMPLE AT ASSEMBLY.
- 5 DEGREASE SURFACE WITH RUBBING ALCOHOL BEFORE APPLYING TAG.
- 6 SET SCREW IN ITEM #12 AND DIMPLE IN ITEM #11 MUST BE ALIGNED BEFORE TIGHTENING.
- 7 ALIGN BALL IN HOLE. TIGHTEN PLUG UNTIL TOUCHES BALL. THEN BACK OUT PLUG 1/4-1/2 TURN.
- 8 THOROUGHLY CLEAN THREADS OF PLUG AND MATING PART AND APPLY LOCTITE 425.



ITEM NO.	DESCRIPTION + +	P/N:	QTY
S/A*	WATER MOTOR ASSEMBLY WITH PSI GAUGE	09110036	1
S/A*	WATER MOTOR ASSEMBLY WITH BAR GAUGE	09110027	1

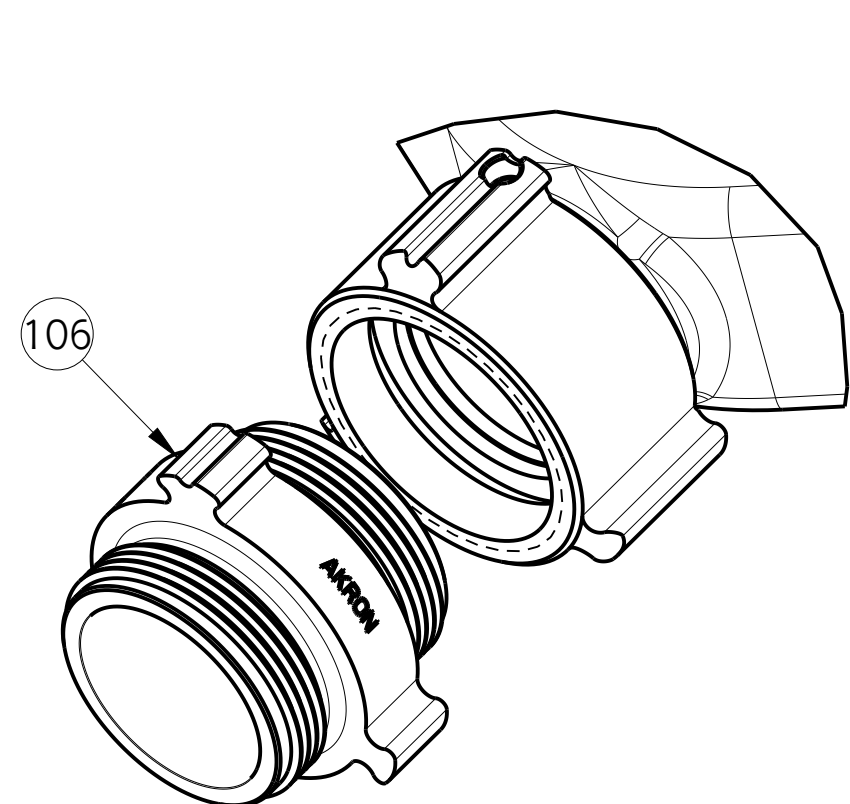
* MUST SPECIFY GAUGE TYPE (PSI OR BAR)

PHONE: 330.264.5678 or 800.228.1161 | FAX: 330.264.2944 or 800.531.7335 | www.akronbrass.com

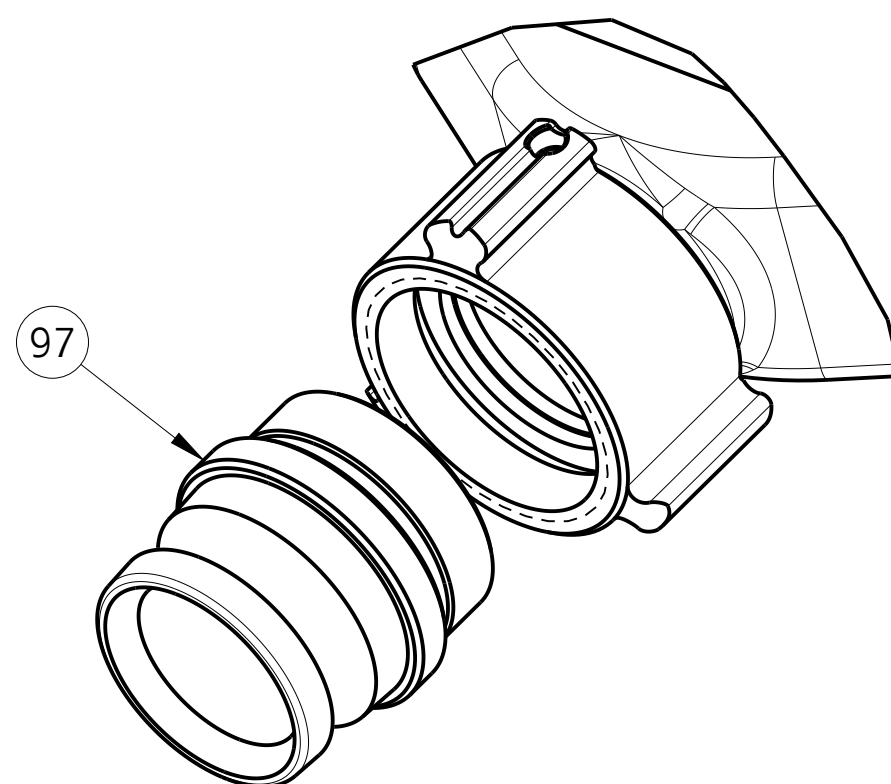
Parts List Sheet:

126046

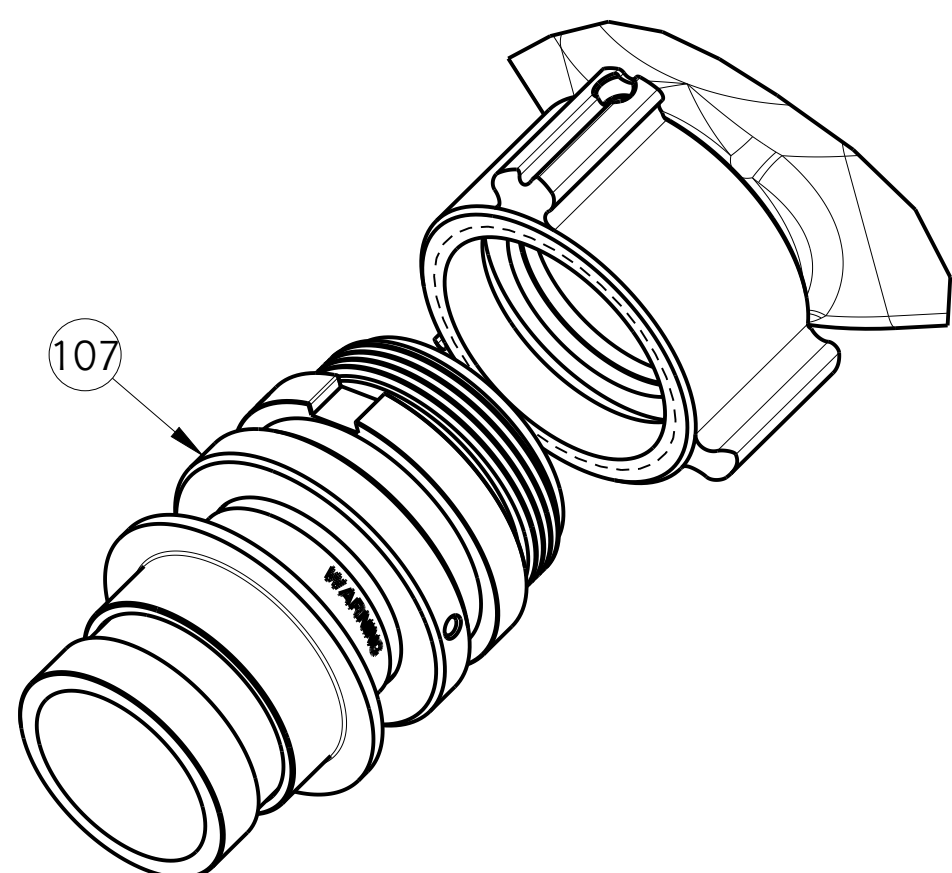
WARRANTY AND DISCLAIMER*: We warrant Akron Brass products for a period of five (5) years* after purchase against defects in materials or workmanship. Akron Brass will repair or replace product which fails to satisfy this warranty. Repair or replacement shall be at the discretion of Akron Brass. Products must be promptly returned to Akron Brass for warranty service. We will not be responsible for: wear and tear; any improper installation, use, maintenance or storage; negligence of the owner or user; repair or modification after delivery; failure to follow our instructions or recommendations; or anything else beyond our control. WE MAKE NO WARRANTIES, EXPRESS OR IMPLIED, OTHER THAN THOSE INCLUDED IN THIS WARRANTY STATEMENT, AND WE DISCLAIM ANY IMPLIED WARRANTY OF MERCHANTABILITY OR FITNESS FOR ANY PARTICULAR PURPOSE. Further, we will not be responsible for any consequential, incidental or indirect damages (including, but not limited to, any loss of profits) from any cause whatsoever. No person has authority to change this warranty. *Unless otherwise provided herein. Akron Brass industrial electronic components & the Severe-Duty Monitor have a one (1) year warranty. Select Akron Brass handline nozzles and valves carry a ten (10) year warranty. Scene Star Lights carry a (6) year warranty. Weldon products have a two (2) year warranty from date of manufacture (excluding consumable components). Select Weldon LED products carry a five (5) year warranty. Honda products have the manufacturers' warranty and Akron Brass disclaims any warranty in respect of those products.



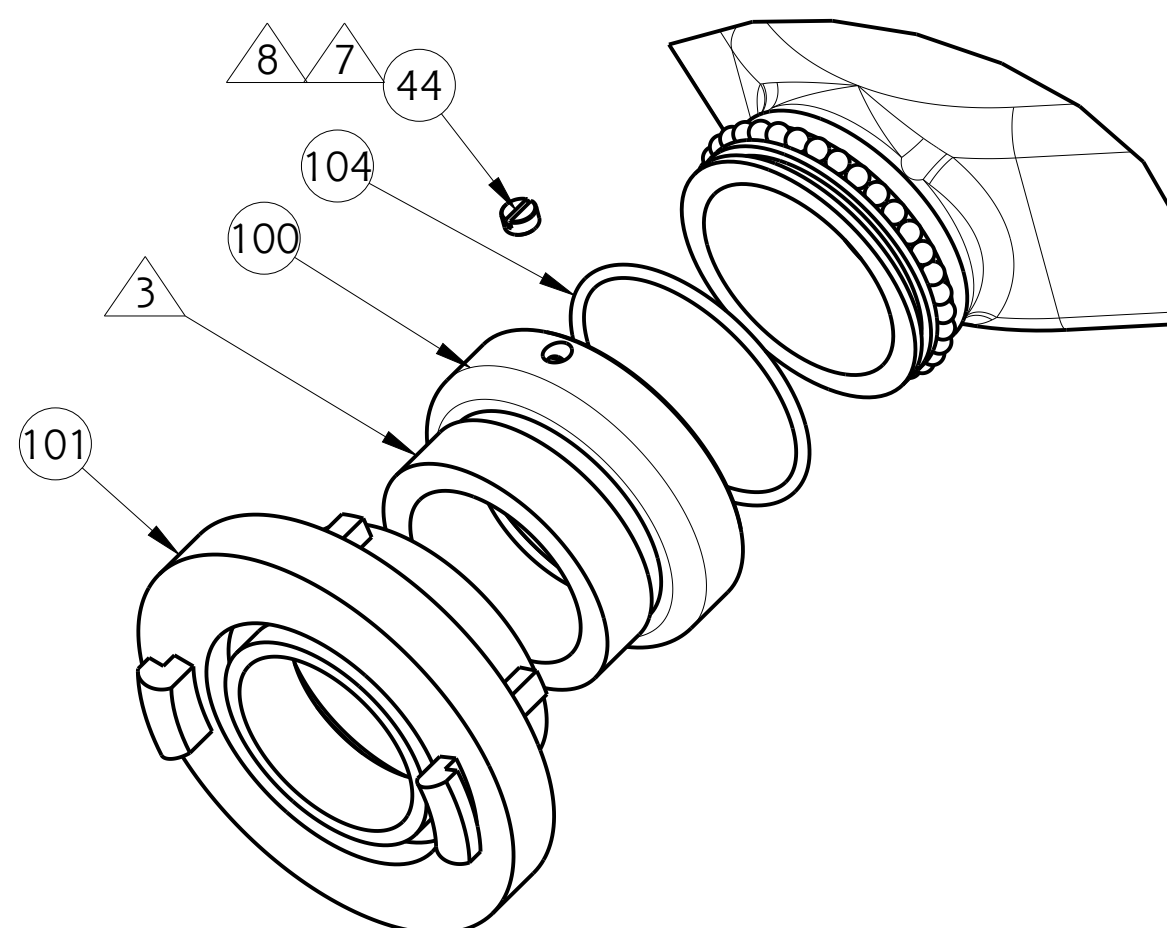
OPITIONAL DOUBLE MALE ADAPTER



OPTIONAL BIM ADAPTER



OPITIONAL J.I.M. ADAPTER



OPITIONAL STORZ ADAPTER

ASSEMBLY NOTES:

USE PARKER O-LUBE ON ALL O-RINGS AND MATING SURFACES UNLESS OTHERWISE NOTED.

- 1 USE PERMABOND LM113 OR LOCTITE 222.
- 2 FOR THREADS UP TO $\phi 2"$: USE PERMABOND LH050 OR LOCTITE 592. FOR THREADS BIGGER THAN $\phi 2"$: USE AGRO "TUF-GLIDE THREAD SEALANT WITH PTFE".
- 3 USE PRIMER T AND PERMABOND HH120 OR LOCTITE 277.
- 4 DIMPLE AT ASSEMBLY.
- 5 DEGREASE SURFACE WITH RUBBING ALCOHOL BEFORE APPLYING TAG.
- 6 SET SCREW IN ITEM #12 AND DIMPLE IN ITEM #11 MUST BE ALIGNED BEFORE TIGHTENING.
- 7 ALIGN BALL IN HOLE. TIGHTEN PLUG UNTIL TOUCHES BALL. THEN BACK OUT PLUG 1/4-1/2 TURN.
- 8 THOROUGHLY CLEAN THREADS OF PLUG AND MATING PART AND APPLY LOCTITE 425.

OPTIONAL INLET ADAPTERS				
Find		Description	Item	QTY
97	#	BIM ADAPTER X 2.5 BSP ADAPTER	03260005	1
100	##	ADADPTER BODY BB GROOVE X 2.5 BSP	119156	1
101	##	65mm STORZ X 2.5 BSP ADAPTER	107923	1
101	##	75mm STORZ X 2.5 BSP ADAPTER	104393	1
106		DBL MALE 2.5 BSP X 2.5 BSP ADAPTER	03360086	1
107		JIM 65mm X 2.5 BSP ADAPTER	09110040	1

* KIT OF 50 BALLS: 123074

BIM INLET REQUIRES BSP GASKET (P/N: 714020) AND BSP INLET (P/N: 123529)

PARTS FOR THE STORZ INLET

+ FOR OTHER THREADS ORDER BY DESCRIPTION AND THREAD SIZE (ODM AND TPI) OR BY AKRON THREAD CODE



TECHNICAL SERVICE PARTS

STYLE 0911

PRODUCT OSCIL. MONITOR

IF AN ITEM IS NOTED AS "NOT FIELD REPAIRABLE", OR YOU WISH TO RETURN AN ITEM TO AKRON BRASS FOR SERVICE PLEASE GO ONLINE TO, **ONLINEREPAIR.AKRONBRASS.COM**

Chg.	Date
26	02-16
27	04-18

Find	Description	Item	QTY
1	C	PRESSURE GAUGE 0-350 PSI	718322 1
1	D	PRESSURE GAUGE 0-25 bars	718323 1
2		KNOB	727030 2
3		LIMIT ARM	702049 2
4		LOCKING PIN	741053 2
5		DRIVE COVER	807096 1
6	C,D	SCREW BUTTON HD 10-24 X 3/4"	766009 8
7	C,D	SCREW SOC HD CAP 10-24 X 3/4"	767086 4
8	C,D	SCREW RND HD 6-32 X 3/8"	763012 14
9	C,D	BLEED TUBE	772130 2
10	C,D	EXHAUST PLUG	744283 2
11	C,D	VALVE STEM	769380 1
12	C,D	KNOB	727031 1
13	C,D	CYLINDER CAP	707225 2
14	B,C,D	O-RING 2-112	757258 2
15	C,D	CYLINDER ROD	749025 1
16	C,D	CYLINDER BLOCK	101899 1
17	B,C,D	O-RING 2-222	757259 2
18	B,C,D	O-RING 2-012	757260 6
19	C,D	CELCON PISTON	744285 1
20	C,D	RETAINING RING	758192 2
21	C,D	O-RING 2-030	757271 2
22	C,D	SCREW SOC HD SET CUP PT 5/16-18X1/4"	765071 2
23	C,D	DIAPHRAGM VALVE	779053 2
24	C,D	RETAINER	758168 2
25	B,C,D	CAP VALVE GASKET	714193 2
26	C,D	VALVE BLOCK	703366 1
27	C,D	VALVE SPOOL	768228 1
28	C,D	BLOCK GASKET	714223 1
29	C,D	VALVE CAP	101900 2
30	C,D	SCREW SOC HD CAP 10-24 X 1 1/4"	767100 4
31	C,D	TEE FITTING	712271 1
32	C,D	SCREW BTTN HD 10-24 X 3/8	765143 2
33		WARNING TAG	773551 1
34	C,D	O-RING 2-007	757262 2
35		FLAT WASHER 1/4 ID X 5/8 OD X3/64 THK	784075 2
36		O-RING 2-223	757125 1
37		DISCHARGE ADAPTER 1-1/2" NH	101896 1

Find	Description	Item	QTY
37	+	DISCHARGE ADAPTER 1-1/2" NPSH	101897 1
38		OUTLET FOR DISCHARGE ADAPTER	101904 1
38		OUTLET 1.5 BSP	119158 1
40		BALL RETAINER COVER	707228 1
41		BALL COVER	707227 1
42		BALL TRUNNION	772129 2
43	B	BALL SEAL	769378 1
44	##	SWIVEL PLUG	742023 2
45		HORIZONTAL TURRET	101907 1
46		PIPE PLUG	744286 2
47		WATERWAY TUBE	109273 1
48		VERTICAL TURRET	101906 1
49		O-RING 2-010	757005 1
50		PLUNGER	744284 1
51		ROLL PIN	744060 1
52		ROCKER ARM	101895 1
53		KNOB	727032 1
54		O-RING 2-152	757149 1
55		O-RING 2-151	757221 2
56		SCREW HEX HD CAP 1/4-20 X 1/2"	761050 8
57		MOTOR BRACKET	704256 1
58		ROLL PIN	744287 1
59		SET SCREW 10-24 X 1/4	765025 1
60		HANDLE	721239 1
61		RETAINING RING	758068 2
62		RIGHT MANIFOLD	109210 1
63		ROLL PIN	744069 2
64		ROLL PIN	744067 2
65	###	INLET WYE	126156 1
66		LEFT MANIFOLD	109094 1
67		SCREW HEX HD CAP 1/4-20X 5/8	761077 12
68		ELBOW FITTING	713075 2
69		SCREW FLT HD 1/4 -20 X 5/8"	767068 2
71	A	BALL ST STL Ø 1/4"	- 76
72		SCREW SOC HD SET DOG PT 1/4-20 X 5/16"	765070 6

BIM INLET REQUIRES BSP GASKET (P/N: 714020) AND BSP INLET (P/N: 123529)
 ## PARTS FOR THE STORZ INLET
 + FOR OTHER THREADS ORDER BY DESCRIPTION AND THREAD SIZE (ODM AND TPI) OR BY AKRON THREAD CODE
 ++ WATER MOTOR ASSEMBLY: 09110036 PSI, 09110027 bar
 ### WHEN ORDERING REPLACEMENT SWIVEL OR INLET WYE.CONFIRM SWIVEL LENGTH. SEE GRAPHIC ABOVE

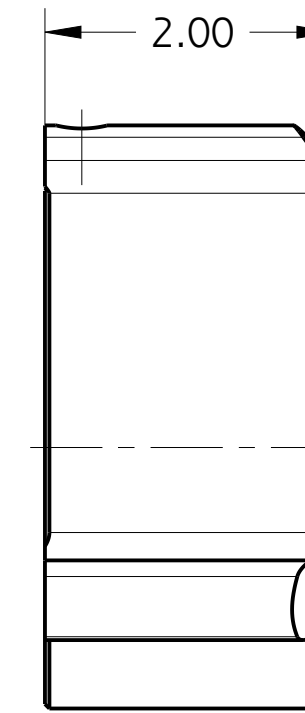
PHONE: 330.264.5678 or 800.228.1161 | FAX: 330.264.2944 or 800.531.7335 | www.akronbrass.com

Parts List Sheet:

126046

WARRANTY AND DISCLAIMER*: We warrant Akron Brass products for a period of five (5) years* after purchase against defects in materials or workmanship. Akron Brass will repair or replace product which fails to satisfy this warranty. Repair or replacement shall be at the discretion of Akron Brass. Products must be promptly returned to Akron Brass for warranty service. We will not be responsible for: wear and tear; any improper installation, use, maintenance or storage; negligence of the owner or user; repair or modification after delivery; failure to follow our instructions or recommendations; or anything else beyond our control. WE MAKE NO WARRANTIES, EXPRESS OR IMPLIED, OTHER THAN THOSE INCLUDED IN THIS WARRANTY STATEMENT, AND WE DISCLAIM ANY IMPLIED WARRANTY OF MERCHANTABILITY OR FITNESS FOR ANY PARTICULAR PURPOSE. Further, we will not be responsible for any consequential, incidental or indirect damages (including, but not limited to, any loss of profits) from any cause whatsoever. No person has authority to change this warranty. *Unless otherwise provided herein. Akron Brass industrial electronic components & the Severe-Duty Monitor have a one (1) year warranty. Select Akron Brass handline nozzles and valves carry a ten (10) year warranty. Scene Star Lights carry a (6) year warranty. Weldon products have a two (2) year warranty from date of manufacture (excluding consumable components). Select Weldon LED products carry a five (5) year warranty. Honda products have the manufacturers' warranty and Akron Brass disclaims any warranty in respect of those products.
 © 2016 Akron Brass Company. All rights reserved. No portion of this can be reproduced without the express written consent of the Akron Brass Company.

Find	Description	Item	QTY
73	O-RING 2-233	757065	4
74	SCREEN W/SEALING RINGS	769770	1
75	###,+ SWIVEL 2.5 NH	123528	1
75	#,###,+ SWIVEL 2.5 BSP	123529	1
76	B GASKET	717043	1
77	ID TAG	773537	1
78	NAIL GRIP	736052	8
79	SLEEVE GROUND SPIKE	769302	2
80	FLAT WASHER	784068	4
81	GROUND SPIKE	769666	4
82	ROLLER	758169	1
83	STRAP ASSEMBLY	769379	2
84	SCREW HEX HD CP 1/2 -13 X 3/4	761065	2
85	STRAP CLIP	707224	2
86	RIGHT LEG	101902	1
87	LEFT LEG	101901	1
88	SAFETY CHAIN SLEEVE	769303	2
89	MANIFOLD GASKET	717040	2
90	WASHER #10	784072	1
91	NAME TAG	773204	1
95	CAUTION TAG	773291	1
96	C,D INSTRUCTION TAG	773292	1
104	## O-RING 2-232	757045	1
A	KIT OF 50 BALLS	123074	
B	FIELD SERVICE KIT	91910001	
C	WATER MOTOR ASSEMBLY W/PSI GAGE	09110036	
D	WATER MOTOR ASSEMBLY W/bar GAGE	09110027	

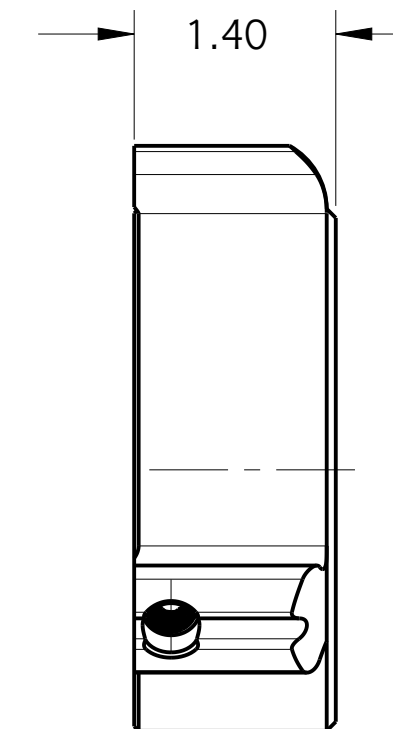


SWIVEL:

2.5 NH: 123528
2.5 BSP: 123529

INLET:

WYE ITEM 65: 126156



SWIVEL:

2.5 NH: 101420
2.5 BSP: 101422

INLET:

WYE ITEM 65: 101903

- * KIT OF BALLS: 123074
- ** INCLUDED IN 91910001 SERVICE KIT
- # BIM INLET REQUIRES BSP GASKET (P/N: 714020) AND BSP INLET (P/N: 123529)
- ## PARTS FOR THE STORZ INLET
- + FOR OTHER THREADS ORDER BY DESCRIPTION AND THREAD SIZE (ODM AND TPI) OR BY AKRON THREAD CODE
- + + WATER MOTOR ASSEMBLY: 09110036 PSI, 09110027 bar
- ### WHEN ORDERING REPLACEMENT SWIVEL OR INLET WYE.CONFIRM SWIVEL LENGTH. SEE GRAPHIC ABOVE

NOTE:

325 GPM(1325 LPM) MAXIMUM FLOW
230 PSI(1600 KPA,16 bar) MAXIMUM PRESSURE
Ø 3"(76mm) HOSE MAXIMUM