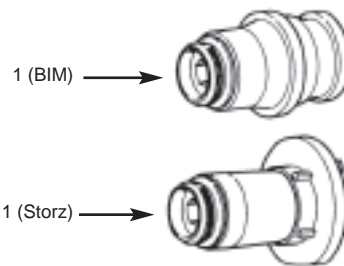
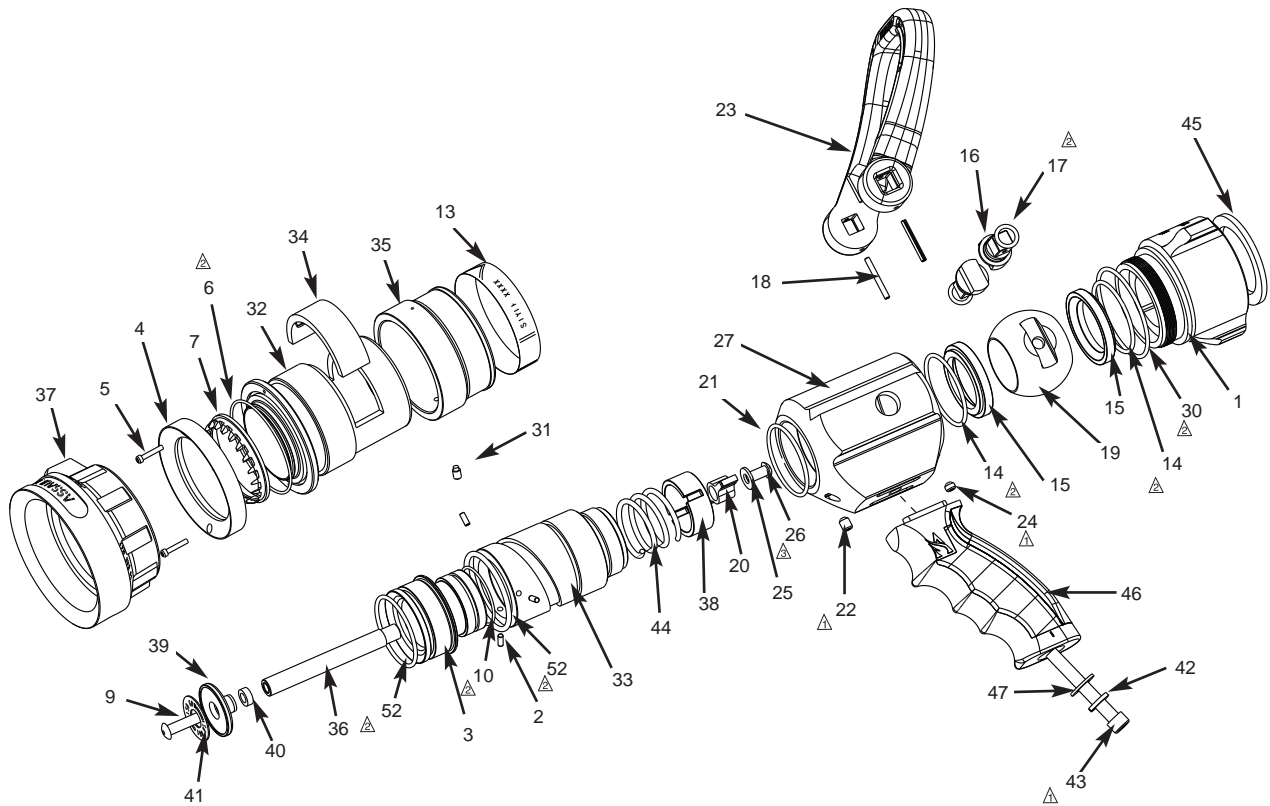





TECHNICAL SERVICE PARTS LIST



ASSEMBLY NOTES

- 1  Use Loctite 222 or 113 Permabond
- 2  Use Parker O-Ring Lubricant or equivalent petroleum based lubricant
- 3  Use Loctite 277 or Permabond HH120

ITEM NO.	DESCRIPTION	PART NUMBER	QUANTITY	
			4815	4820
1	Swivel Assembly (1 1/2" NH) **	45290002	1	1
1	Swivel Assembly (1 1/2" NPSH) **	45290003	1	1
1	Swivel Assembly (1 1/2" BSP) **	45290005	1	1
1	Swivel Assembly (BIM)	45290009	1	1
1	Swivel Assembly (52mm Storz)	17630014	1	1
2	Throat Retainer Pins	7-44-178	3	3
3	Throat	119883	1	1
4	Turbine Retaining Ring	7-58-241	1	1
5	Socket Head Cap Screw	7-67-094	2	2
6	O-Ring	7-57-309	1	1
7	Turbine Teeth	7-72-153	1	1
9	Socket Head Button Screw	7-65-182	1	1
10	O-Ring	7-57-066	1	1
13	Pattern Indicator Band	7-04-895		1
13	Pattern Indicator Band	7-04-894	1	
14	O-Ring	7-57-422	2	2
15	Seat	7-69-243	2	2
16	Trunnion	107860	2	2
17	O-Ring	7-57-269	2	2
18	Roll Pin	7-44-062	2	2
19	Ball	7-04-029	1	1
20	Spider	7-68-296	1	1
21	O-Ring	7-57-232	1	1
22	Socket Head Set Screw	7-65-002	1	1
23	Handle (Black)	7-21-427	1	1
24	Socket Head Set Screw	7-65-008	1	1
25	Washer	7-84-094	1	1
26	Socket Head Button Screw	7-65-149	1	1
27	Shutoff Body	119890		1
27	Shutoff Body	119889	1	
30	O-Ring	7-57-265	1	1
31	Socket Head Screw	7-67-088	1	1
32	Pattern Sleeve ***	119887	1	1
33	Nozzle Body	120205	1	1
34	Cam Insert	7-23-033	1	1
35	Pattern Sleeve Ring	119886	1	1
36	Baffle Stem	119888	1	1
37	Bumper ***	7-04-789	1	1
38	Spider Retainer	116903	1	1
39	Baffle Head	107967	1	1
40	Flow Spacer	*	1	1
41	Flow Label	*	1	1
42	Lock Washer	7-84-090		1
43	Socket Head Cap Screw	7-63-064		1
44	Spring	7-69-629	1	1
45	Swivel Gasket	7-17-042	1	1
46	Pistol Grip (Black)	7-18-233		1
47	Washer	7-84-093		1
52	O-Ring	7-57-268	2	2

*To replace flow spacers or labels, contact customer service.

** For other threads, order by description and thread size (ODM and TPI) or by Akron tread code.

*** The bumper is pressed on and timed with the pattern sleeve. It may need to be returned to the factory for proper assembly.